

MORINI

S6- S SPORT

50cc – 2 stroke - air cooled

CODE 002904



LUKS CENTRAL-LAGER

7. februar 2003 PEC



**MORINI
FRANCO
MOTORI**

INDHOLDSFORTEGNELSE

TEKNISKE DATA	3
POWER SKEMA	4
MOTOR BLOKKE	5 - 6
KICHSTARTER	7 - 8
KOBLING	9 - 10
TÆNDING	11 - 12
KARBURATOR	13 - 14
CYLINDER + TOP	15 - 16

**ENGINE TYPE: S6-S Sport S Air Cooled**

ENGINE	Two-Stroke Single Cylinder
CYLINDER	Light alloy with nickel silicon carbide plated liner with 6 scavenge ports
BORE	39,0 mm
STROKE	41,8 mm
DISPLACEMENT	49,908 cc
INTAKE	Reed valve w/ 4 flaps in crankcase Adjustable manifold orientation
COMPRESSION RATIO	14,5 +/- 0,3 : 1
MAX. POWER CRANKSHAFT	6,91 KW (9,4 HP) at 11000 rpm
MAX. POWER WHEEL	6,47 KW (8,8 HP) at 11000 rpm
MAX. TORQUE CRANKSHAFT	6,39 Nm at 10000 rpm
MAX. RPM	13500 rpm
COOLING	Natural air flow
CARBURATOR	Dell'Orto PHBG Venturi = 19,0mm *Option: Dell'Orto PHBN Venturi = 14,0mm
LUBRIFICATION	Fuel with 2 % oil mixture *OPTION: oil pump ratio 1:1,75
IGNITION	Electronic magnetic flywheel with internal rotor and microprocessor ignition timing management. External ignition coil
GENERATOR	-----
STARTER	Kickstarter (forward kick)
CLUTCH	Automatic centrifugal superlight 3-shoe adjustable oil bath clutch
PRIMARY TRANSMISSION	Straight toothing gears Z=59/14 ratio 1:4,21
SECONDARY TRANSMISSION	Chain 1/2" x 3/16" 7.75mm roll (sprocket Z=10 or Z11)
CHAIN ALIGNMENT	55 mm
SPARK PLUG	Champion C53 / NGK B105EGV M14x1,25
FUEL	EURO unleaded NC 623-02 R.O.N. 95
LUBRIFICATION OIL TYPE	AGIP 2T, IP 2T, CASTROL 2T, CASTROL TTS
OIL CAPACITY ENGINE	250cc (220g) AGIP RADULA 68 SAE 20W
DRY WEIGHT	8,0 kg

7. februar 2003 PEC
13/09/01 CI

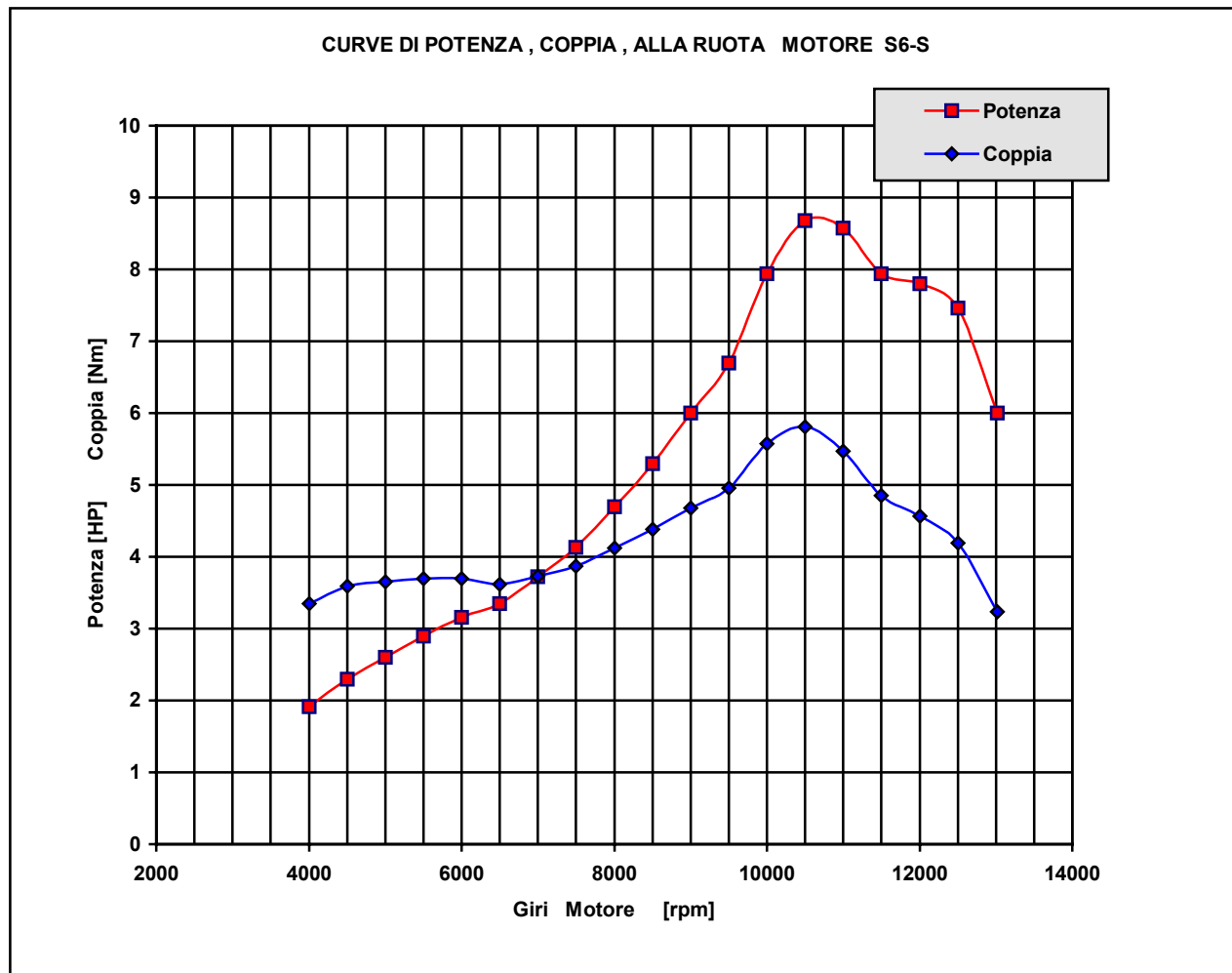
ENGINE TYPE: **S6-S Sport Air Cooled**

POWER – TORQUE - CONSUMPTION



Max power at wheel: 6,47 Kw (8,8 CV) at 11000 rpm

Max torque at wheel: 5,80 NM at 10000 rpm



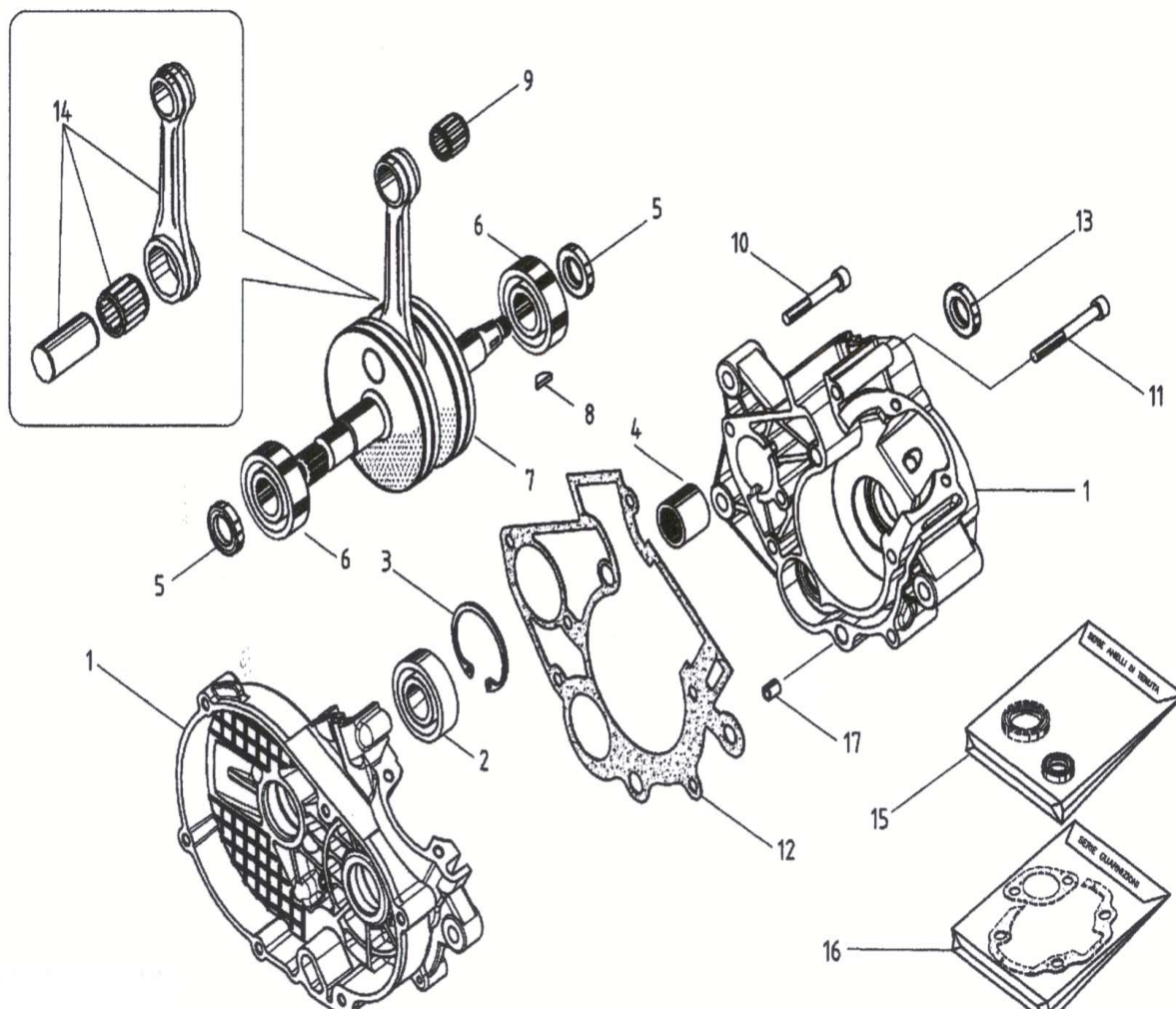
* The indicated performance values are to be considered as minimum values registered according to MORINI FRANCO MOTORI S.p.A. standard specification RS140.

** The engine has been tested mounted with MORINI FRANCO MOTORI accessories and the registered power, torque and consumption curves can therefore divert relatively depending on the influence from using specific customized accessories. (especially air filter box and exhaust system)

MOTOR S6 Sport Cod 002904	MOTOR BLOKKE	Tavle A
--	---------------------	----------------

Fig. No.	C o d e	Antal	B e s k r i v e l s e
A01	1 2 - 0 6 9 0	1	MOTORBLOKKE S6
A02	1 2 - 6 0 6 7	1	LEJE 6003 C5 17X35X10
A03	1 0 - 5 0 7 0	1	CIRCLIP D36 S6
A04	1 0 - 8 5 1 2	1	BØSNING
A05	1 0 - 6 0 3 3	2	PAKDÅSE 16,5X27X6
A06	1 2 - 6 0 2 1	2	LEJE 6203 C3 17X40X12
A07	1 0 - 0 1 8 9	1	KRUMTAP S6
A08	1 2 - 7 0 2 5	1	NOT TÆNDING
A09	1 6 - 1 0 2 4	1	TOPLEJE 12X15X15
A10	2 9 - 1 9 9 1	7	UMBRAKO SKRUE 6X50
A11	2 9 - 1 9 9 3	1	UMBRAKO SKRUE 6X50
A12	1 6 - 4 2 9 7	1	MOTORPAKNING S6
A13	1 0 - 6 0 3 4	1	PAKDÅSE 15,9X27X5
A14	1 1 - 0 0 4 1	1	PLEJLSTANG KOMPLET S6
A15	2 6 - 0 5 3 6	1	PAKDÅSESÆT KOMPLET
A16	2 6 - 0 6 5 7	1	PAKNINGSSÆT KOMPLET
A17	2 6 - 8 1 2 7	2	BØSNING

MOTOR S6 Sport Cod 002904	MOTOR BLOKKE	Tavle A
--	---------------------	----------------



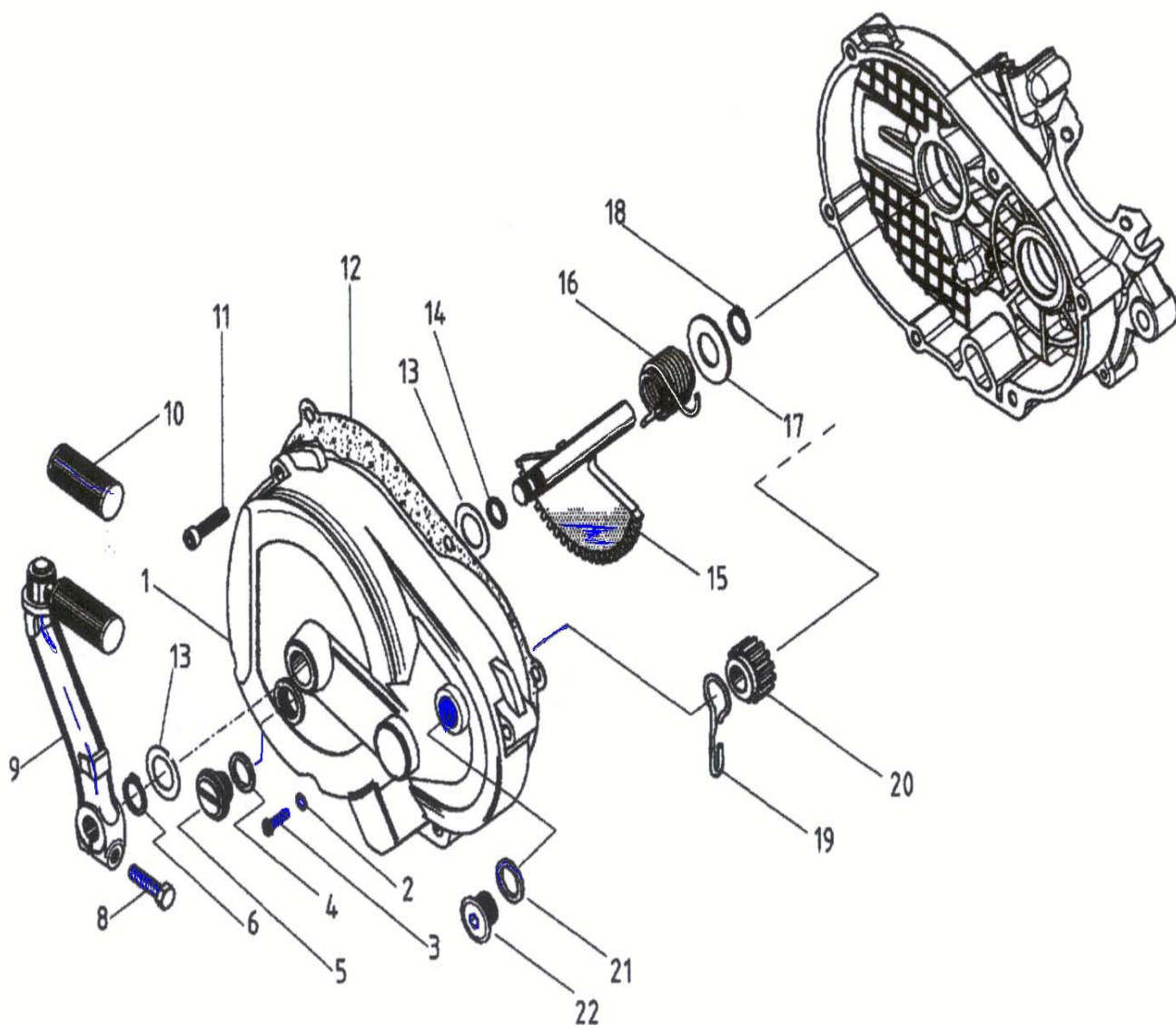
MOTOR S6 Sport Cod 002904	KICHSTARTER	Tavle B
--	--------------------	----------------

Fig. No.	Code	Antal	Beskrivelse
B01	1 2 - 4 2 7 6	1	KOBLINGSDEKSEL S6
B02	1 6 - 4 0 6 9	1	PAKNING ALUMINIUM
B03	2 9 - 6 0 0 1	1	SKRUE TCB 6X8
B04	1 6 - 4 0 2 6	1	PAKNING OLIE PROP
B05	2 7 - 3 0 0 7	1	OLIE PROP S6
B06	1 0 - 5 0 2 9	1	CIRCLIP DIN 471
B08	2 9 - 4 1 1 5	1	SKRUE TE 7X25
B09	1 9 - 0 0 2 9	1	KICHSTARTERARM
B10	1 6 - 3 0 2 8	1	KICHSTARTERGUMMI S6
B11	2 9 - 1 9 8 7	6	UMBRAKOSKRUE 6X30
B12	1 6 - 4 2 9 6	1	KOBLINGSDEKSEL PAKNING S6
B13	2 5 - 4 0 0 5 0 8	2	SKIVER 0,08
B14	1 0 - 7 0 2 4	1	SEAL F/AKSEL
B15	1 0 - 0 1 8 8	1	KICHSTARTER AKSEL
B16	2 0 - 1 1 8 1	1	FJEDER F KICHSTARTER
B17	2 5 - 4 0 1 0	1	SKIVE
B18	1 0 - 5 0 0 1	1	CIRCLIP D15 E
B19	2 0 - 1 1 8 2	1	FJEDER S6
B20	1 8 - 1 3 0 0	1	TANDHJUL KICHSTARTER
B21	1 6 - 4 0 0 9	1	PAKNING
B22	2 7 - 3 0 4 6	1	JUSTERSKRUE KOBLING S6

MOTOR
S6 Sport
Cod 002904

KICHSTARTER

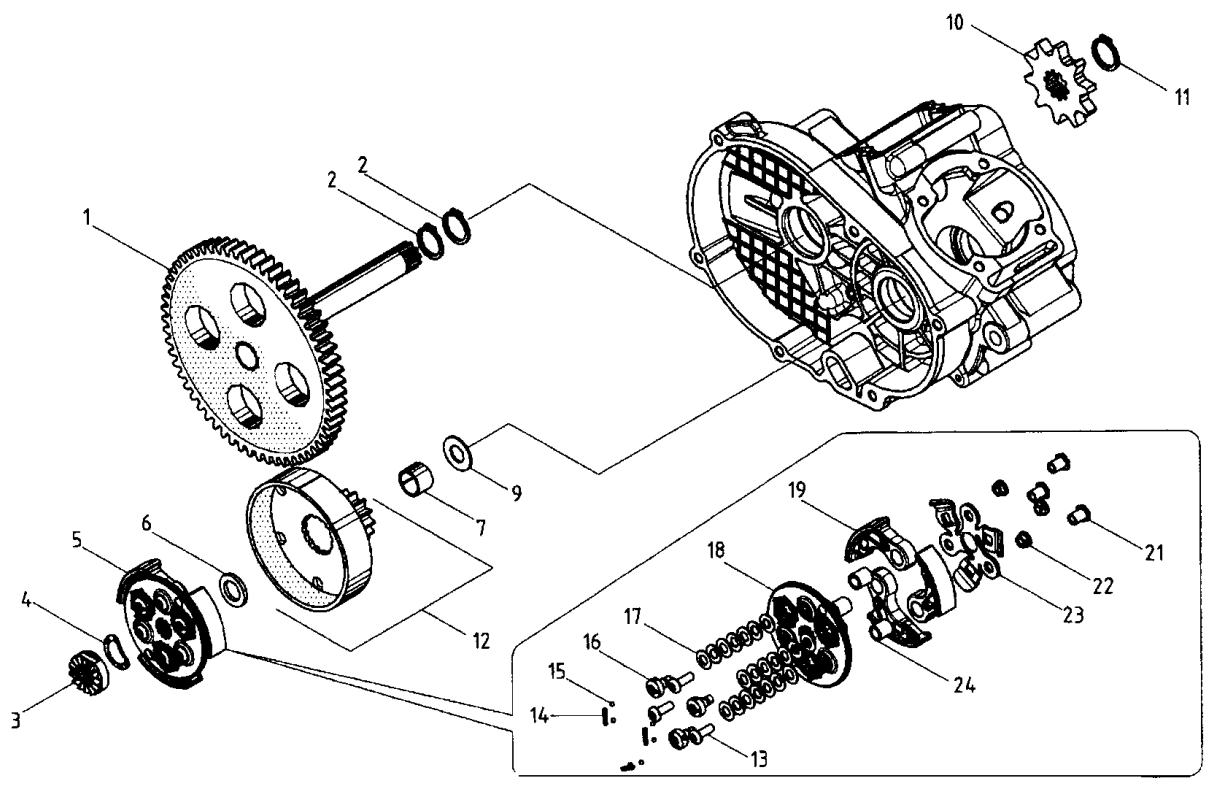
Tavle B



MOTOR S6 Sport Cod 002904	KOBLING	Tavle C
--	----------------	----------------

Fig. No.	Code	Antal	Beskrivelse
C01	1 2 - 0 6 8 9	1	BRAKE BLOCK S6
C02	1 0 - 5 0 7 7	2	CIRCLIP D17 F/AKSEL
C03	1 3 - 1 0 3 5	1	MØTRIK C/STARTING S6
C04	2 0 - 1 1 9 5	1	FJEDERSKIVE D10 5X20X1,5
C05	1 5 - 0 0 9 5	1	KOBLING KOMPLET SPORT-COM
C06	1 3 - 6 1 3 0	1	SKIVE KOBLINGSKÅL S6
C07	1 1 - 5 0 9 7	1	BØSNING KOBLING S6
C09	2 5 - 4 0 0 5 0 6	1	SKIVE KOBLING S6
C10	2 3 - 2 6 0 8	1	TANDHJUL Z10
C10	2 3 - 2 6 1 1	1	TANDHJUL Z11
C11	1 0 - 5 0 3 5	2	CIRCLIP DIN 471
C12	1 8 - 0 0 3 1	1	KOBLINGSSKÅL S6
C13	2 9 - 6 1 2 3	3	SKRUER FOR KOBLING TCBEI M5X14 S6
C14	2 0 - 1 1 8 6	3	FJEDER JUSTER KOBLING S6
C15	2 6 - 8 2 4 1	3	KUGLER F/KOBLING D2,5 S6
C16	2 9 - 6 1 2 7	3	SPECIAL SKRUER KOBLING S6
C17	2 0 - 1 1 9 6	21	FJEDERSKIVER 6,2X12X0,6 DIN 2093 S6
C18	2 3 - 7 1 4 2	1	KOBLINGSBAGPLADE S6
C19	2 0 - 0 0 9 2	3	KOBLINGSBAKKER S6
C21	2 1 - 4 0 1 3	3	KOBLINGSPAWL S6
C22	2 7 - 7 1 5 8	3	KOBLINGSSKRUER S6
C23	2 0 - 1 1 8 4	1	KOBLINGSSPRIG S6
C24	1 1 - 5 1 0 2	3	BØSNING KOBLING S6

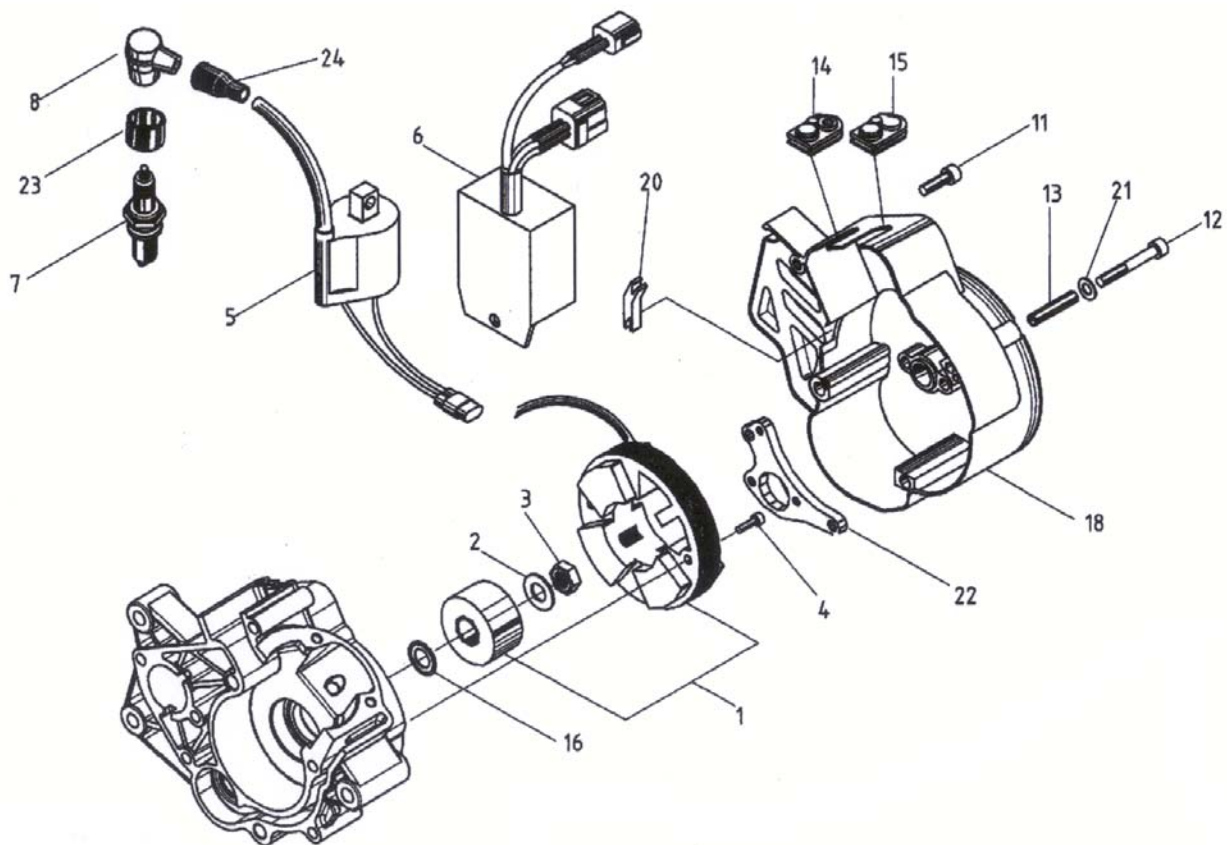
MOTOR S6 Sport Cod 002904	KOBLING	Tavle C
--	----------------	----------------



MOTOR S6 Sport Cod 002904	TÆNDING	Tavle D
--	----------------	----------------

Fig. No.	Code	Antal	Beskrivelse
B01	1 2 - 4 2 7 6	1	KOBLINGSDÆKSEL S6
B02	1 6 - 4 0 6 9	1	PAKNING ALUMINIUM
B03	2 9 - 6 0 0 1	1	SKRUE TCB 6X8
B04	1 6 - 4 0 2 6	1	PAKNING OLIE PROP
B05	2 7 - 3 0 0 7	1	OLIE PROP S6
B06	1 0 - 5 0 2 9	1	CIRCLIP DIN 471
B08	2 9 - 4 1 1 5	1	SKRUE TE 7X25
B09	1 9 - 0 0 2 9	1	KICHSTARTERARM
B10	1 6 - 3 0 2 8	1	KICHSTARTERGUMMI S6
B11	2 9 - 1 9 8 7	6	UMBRAKOSKRUE 6X30
B12	1 6 - 4 2 9 6	1	KOBLINGSDÆKSEL PAKNING S6
B13	2 5 - 4 0 0 5 0 8	2	SKIVER 0,08
B14	1 0 - 7 0 2 4	1	SEAL F/AKSEL
B15	1 0 - 0 1 8 8	1	KICHSTARTER AKSEL
B16	2 0 - 1 1 8 1	1	FJEDER F KICHSTARTER
B17	2 5 - 4 0 1 0	1	SKIVE
B18	1 0 - 5 0 0 1	1	CIRCLIP D15 E
B19	2 0 - 1 1 8 2	1	FJEDER S6
B20	1 8 - 1 3 0 0	1	TANDHJUL KICHSTARTER
B21	1 6 - 4 0 0 9	1	PAKNING
B22	2 7 - 3 0 4 6	1	JUSTERSKRUE KOBLING S6

MOTOR S6 Sport Cod 002904	TÆNDING	Tavle D
--	----------------	----------------



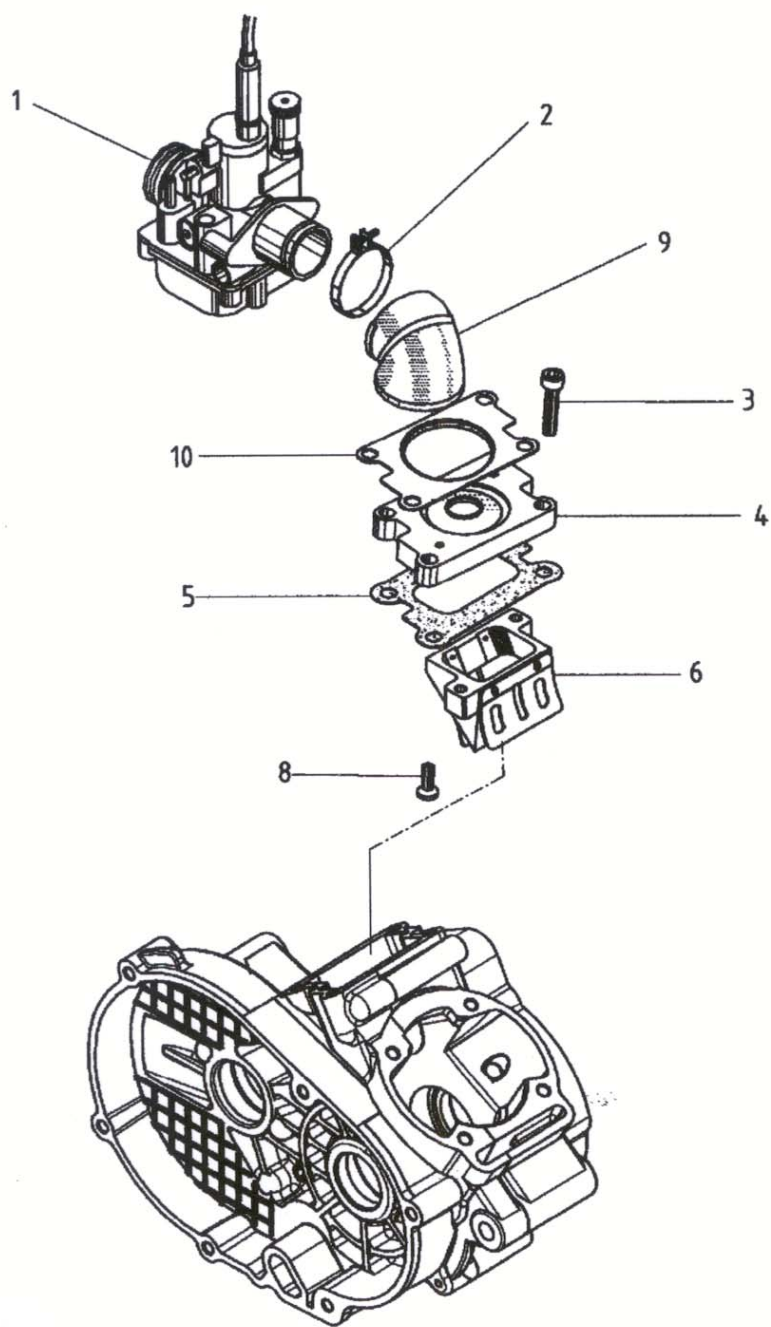
MOTOR S6 Sport Cod 002904	KARBURATOR	Tavle F
--	-------------------	---------

Fig. No.	C o d e	Antal	B e s k r i v e l s e
F01	1 2 - 0 8 4 1	1	KARBURATOR PHBG 19 BS
F02	1 5 - 1 0 1 5	1	CLAMP
F03	2 9 - 1 9 8 6	4	UMBRAKO 6X25
F04	1 1 - 8 0 2 7	1	KARBURATOR BASE ALU
F05	1 6 - 4 2 9 8	1	KARBURATOR PAKNING S6
F06	2 9 - 0 5 4 1	1	MEMBRAN UPGRADED S6
F08	2 9 - 6 0 5 1	2	SKRUE
F09	2 0 - 6 0 8 9	1	MANIFOLD KARBURATOR S6
F10	2 3 - 7 1 4 0	1	SLEEUE PLATE S6

MOTOR
S6 Sport
Cod 002904

KARBURATOR

Tavle F



MOTOR S6 Sport Cod 002904	CYLINDER + TOP	Tavle G
--	-----------------------	----------------

Fig. No.	Code	Antal	Beskrivelse
G01	77 - 3966	1	CYLINDER + STEMPEL KOMPLET S6
G02	23 - 0182	1	STEMPEL KOMPLET S6
G03	27 - 5091	1	TOPSTYKKE S6 SPORT
G04	13 - 1005	4	MØTRIK
G05	25 - 4081	4	SKIVE D7
G06	23 - 5032	4	STØTTEBOLT KORT TOPSTYKKE
G07	16 - 4309	1	TOPPAKNING LUFTKØLET S6
G08	12 - 7336	4	BØSNING FOR TOPSTYKKE S6
G09	25 - 4001	4	SKIVE S6
G10	23 - 5051	4	CYLINDERSTØTTER LANG SPORT S6
G11	16 - 4295	1	BUNDPAKNING S6 SPORT
G12	10 - 7065	2	O-RING UDSØDNINGSPAKNING S6
G13	26 - 1056	2	STEMPELRING D39
G14	26 - 8107	1	STEMPELPIND D12
G15	10 - 4001	2	G-RING

MOTOR S6 Sport Cod 002904	CYLINDER + TOP	Tavle G
--	-----------------------	----------------

